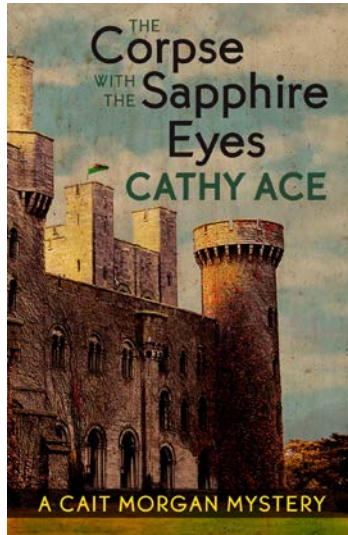


BOOK CLUB QUESTIONS

The Corpse with the Sapphire Eyes

by Cathy Ace



General topics:

1. Which character would you most like to invite to join your Book Club for this meeting? Why?
2. Which character would you cross the street to avoid? Why?
3. If you were casting a movie of this book, who would you cast in which parts?
4. Cait's pretty sure of herself, until she isn't. She's pretty bossy, until she's scared. She's got a photographic memory, but forgets things. She likes to take charge, but turns to Bud for support. She's comfortable with her weight, but tries to joke about it before others can mention it. She loves to smoke, but knows it's bad for her. Why are we humans so contradictory? Are you? How? Why? List some other fictional characters who are defined by contradiction.
5. The world famous "Detection Club", whose members included Agatha Christie, drew up "rules" for mystery novels. One of them was that a clue that could help solve the case must not be concealed from the reader. What were the clues that helped Cait solve the case? How many of them did you spot as you were reading? When did you solve the case?

Relating specifically to “The Corpse with the Sapphire Eyes”

1. Sometimes family members give the best of themselves to outsiders and treat their family members less than well. This is presented in several forms in this book. Why do you think that happens? Is it what we all do, and expect, or is it an oddity?
2. The book is set in Wales, close to the city of Swansea where Cait was born and raised. She expects to feel “at home” when she returns to the area, but doesn’t. When a person’s been away for years, is it possible to “go home” and have it feel the way it once felt? Why do you think that is/isn’t?
3. Cathy describes this book as her homage to “Agatha Christie meets Nancy Drew in a setting provided by Edgar Allen Poe”. What do you think?
4. The practice of layer upon layer of construction taking place in sites thought of as “special” can be observed the world over. In this instance lay lines, a prehistoric stone circle, a Roman temple, medieval stronghold and Victorian industrialist’s fanciful castle are all located in the same place. Are you familiar with other places like this? Why do you think this happens?
5. Just for fun – have a session where you use the pronunciation tips at the back of the book and speak all the Welsh words aloud. Pack an umbrella, because Welsh language can produce a fair amount of spray!
6. Has anyone in the group been to Wales? Do you wish you could go? If you want to see the castles which inspired this book here are two websites, one is for Cardiff Castle, the other for Castell Coch – both mentioned in the book. The interiors are magical, the exteriors breathtaking. There’s also a web address for you to be able to see the natural beauty of the Gower Peninsular, the setting for Castell Llwyd. I hope you enjoy visiting Cait’s (and Cathy’s) “neck of the woods”.

<http://www.cardiffcastle.com/>

<http://cadw.gov.wales/daysout/castell-coch/?lang=en>

<http://www.explore-gower.co.uk/>

The Corpse with the Sapphire Eyes: ISBN 978-1771511209

Author: Cathy Ace

Publisher: TouchWood Editions

Year of publication: 2015

Thanks for choosing to read this book!

